

# Upcoming Class



Family and  
Consumer  
Sciences



Wyandotte County  
Extension



Wyandotte County  
K-State Research  
and Extension



www.wyandotte.  
k-state.edu

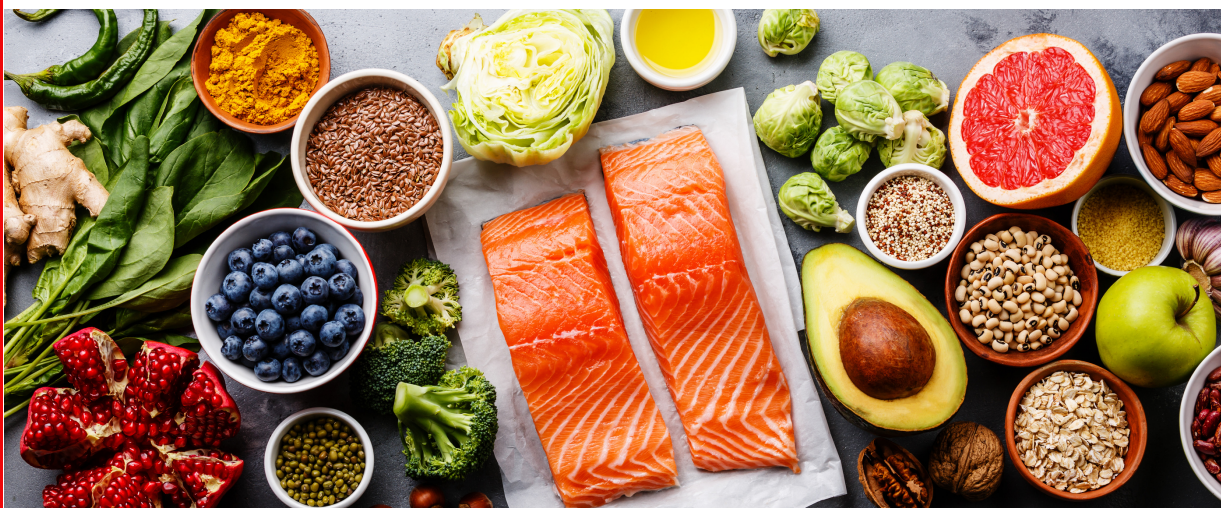
## Dining with Diabetes Fall Online Course

Registration: Aug. 16- Sept. 15, 2021

Registration Link: <https://tinyurl.com/22skttex>

Class Begins: Sept. 20 • Limited to 20 participants

Course Fee: \$25



For details contact  
Lori Wuellner,  
Family and Consumer  
Sciences Agent  
913-299-9300 ext. 107  
lwuellne@ksu.edu

The Dining with Diabetes Online course is provided by Kansas State University Research and Extension educators and certified Dining with Diabetes course instructors and is designed for adults with type 2 diabetes, pre-diabetes, and their family members, caregivers, and support persons. This course helps individuals learn strategies to manage their diabetes through menu planning, carbohydrate counting, portion control, and label reading.



NATIONAL EXTENSION WORKING GROUP



Wyandotte County

**Kansas State University Agricultural Experiment Station and Cooperative Extension Service**

K-State Research and Extension is an equal opportunity provider and employer. Kansas State University is committed to making its services, activities and programs accessible to all participants. If you have special requirements due to a physical, vision, or hearing disability, contact Lori Wuellner, 913-299-9300 ext. 107 .