



THE CLOVER CONNECTION



The official monthly newsletter of Wyandotte County 4-H

By Casey Ling, 4-H Youth Development Extension Agent

Reminder: All 4-H members who participated in last year's fair are now required to attend a minimum of 5 monthly club meetings to participate in the fair again this year. Make sure you are attending your club's monthly meetings!

4-H Motto: To Make the Best Better!

In this month's newsletter:

- **Deadlines!!**
 - **YQCA Certifications Due - June 15**
- **YQCA Class - June 13**
- **WyCoFairbook**
- **Photography Boards and Sleeves**
- **Fair Entry Opens - June 8**
- **Fair Entry Instructions**
- **4-H Summer Camp @ Rock Springs Ranch**
- **WyCo Fair Sponsors for Prizes**



Fair Entry will open on **June 8th** for county fair 4-H entries and will close on **July 10th**.

Check pages 3 and 4 for more details

YQCA In Person Class at the Extension Office June 13th

We will be hosting an in-person YQCA class on **June 13th at 11 am**. The class will be held in room 1200 at the Extension Office.

The course will be taught by Dr. Terrie Casey. Dr. Casey is the Agriculture and Natural Resources Extension Agent for Shawnee County and is a certified YQCA instructor.

To sign up for the in-person course, sign in to your YQCA account, select YQCA Wyandotte County, and pay the \$3 participation fee online. Participants **NEED TO SIGN UP** if they will be there.

We need a minimum of 10 participants to hold the class, so please sign up! If you have any questions, feel free to reach out to the office at (913) 299-9300 or email LotusH@ksu.edu. Thank you!

YQCA Certifications: Due June 15th

An annual YQCA certification is required for all 4-Hers showing livestock animals in the 4-H divisions at the Wyandotte County Fair. Livestock animals include all cattle (dairy and beef), swine, goats (dairy and meat), sheep, poultry, and rabbits.

Cloverbuds (5-7 year olds) are exempt from the YQCA certification requirement.

Youth for the Quality Care of Animals (YQCA) is a national, multi-species youth livestock quality assurance program that focuses on food safety, animal well-being, and character development, through age-appropriate educational curriculum for youth 8-21 years of age. This program is an annual certification that grows with a young person, so the learning modules are different every year. YQCA certification is good for one year and must be completed annually.

4-H members showing a livestock animal must submit their annual YQCA certification to the Extension Office by June 15, 2026.

The 4-H agent cannot access your account on the YQCA website. You must download or screen shot your certificate and send it to the Extension Office via email- csling@ksu.edu or LotusH@ksu.edu

2026 WyCo 4-H Fair Book

The 2026 4-H Fair Book is live!

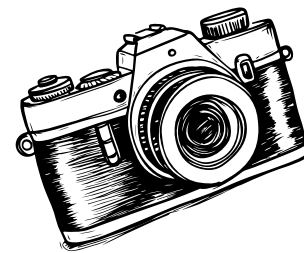
A digital copy of the 4-H Fairbook was emailed to all 4-H families on April 15th. The Fairbook includes all the rules around showing 4-H exhibits at the county fair. It also contains Kansas State Fair qualifying information for Red Barn (static) exhibits. The 4-H Fairbook is posted on the Wyandotte Extension website.

If you have any questions about rules, please reach out to your club or project leaders or the 4-H Agent.



Photography Boards and Sleeves

The white photography boards and clear plastic sleeves needed to display your 4-H photography projects at the county and state fairs are available for purchase at the Extension Office.



Each photo board is \$1 and sleeves are 25 cents.

FairEntry will Open for County Fair 4-H Entries on June 8th

WyCo 4-H uses the FairEntry online platform for entering 4-H projects, recording results, and calculating ribbon premiums for the 4-H divisions at the county fair. All projects that are to be judged in the 4-H division must be pre-entered through FairEntry.com.

4-Hers can enter their projects on fairentry.com between **Monday June 8th and FRIDAY July 10th**. FairEntry will close and **no longer accept entries at 11:59pm on July 10th**. Any late entries will be accepted at the discretion of 4-H staff.

If you have questions or encounter any issues while entering your projects in Fair Entry, please reach out to your club leader or the 4-H agent.

Tips for using FairEntry.com

- Use a laptop or desktop when submitting entries through FairEntry. **Avoid using cellphones or tablets.**
- Use the most up to date browsers. (Chrome, Firefox, etc)
- If you encounter problems with your browser, try clearing your cache.
- For multiple 4-H members in your family, it is easier to enter all of one 4-Her's projects before moving on to the next 4-H member's projects. Enter all family members projects before submitting.
- It is okay to ask the 4-H Agent to check your entries to make sure you didn't miss anything!

FairEntry.com Instructions

1. Go to fairentry.com (Not 4-HOnline.com! You will log on to 4-H Online in step 5!)
2. On the top of the web page, click on "Find Your Fair"
3. Using the Search By Keyword box, type in 2026 Wyandotte County 4-H Showcase and click the blue "Search" button.
4. The option for the 2026 Wyandotte County 4-H Showcase should appear highlighted in yellow. Click on this option.
5. A sign in page will appear with options to sign in using Fair Entry or 4-H Online. Use the 4-H Online option to sign in and follow the prompts that appear.
6. Once logged in, you will be on your 4-H family's FairEntry dashboard. Click on the green button that says "begin work on a new invoice".
7. The next screen will show the members of your family that are enrolled on 4-H Online. Click on "Create Entry" beside the 4-Her's name to start entering their projects.
8. Enter all of the projects for each 4-H member of your family before submitting. (See the instructions on the next page for entering Red Barn (static) entries.)
9. After entering all projects for your family click the "Submit" button. Entries are not final until they have been submitted.
10. Check your email inbox for a confirmation email with a list of your entries.
11. You will receive a second email when your entries have been approved by the 4-H agent.

Fair Entry Instructions for Red Barn (Static) Entries

This section of instructions is intended to fit under step 8 of the previous section's FairEntry.com instructions. Red Barn projects are entered on FairEntry.com under the **4-H Building Exhibits Department**.

1. After selecting the 4-H Building Exhibits, a menu of all the static 4-H divisions will appear. Select the division you will be entering your project in.
2. Choose the class your project will be entered in. Some classes will have additional breakdowns into age groups. Select the appropriate age group then click "Continue".
3. An "Entry Details" box will appear for you to briefly describe your project entry. Please put information in this box that describes your project in such a way that if your entry tag becomes separated from your project, any person will understand which project the tag belongs to.
4. The next page will have an option to add additional entries or to complete the entry process. To add more entries, select "Add another Entry" If you are done entering projects in the fair, select "Continue to Payment"
5. An invoice will be created, but the total will be \$0.00.
6. Click "continue" until you get to the confirmation page. Don't forget to hit "Submit"!



4-H Summer Camp at Rock Springs Ranch

Registration for 2026 4-H Camp at Rock Springs Ranch is now open!

Participants do not have to be members of 4-H to attend Rock Springs Ranch Camp. Invite your friends and family!

4-H Camp has options for 4-Hers ages 7- 17 years old. Camp activities range from archery, swimming, horseback riding, high ropes, canoes, kayaking, ziplines, climbing wall, various shooting sports including BBs, rifles, trap shooting, and more! Many of the buildings and facilities have been recently updated to be more comfortable and modern.

Check out the [Rock Springs Ranch website](#) for more info and to register your 4-Her.



Sponsors Needed for 4-H Red Barn Champions!



The Wyandotte 4-H program is seeking sponsors for the Red Barn exhibit champions. 4-H Red Barn exhibits are "static" or non-animal projects. Each year, Red Barn exhibits account for about half of the 4-H county fair entries. Project areas for the Red Barn exhibits include Visual and Fiber Arts, Photography, Horticulture (Flowers and Vegetables), Clothing & Textiles, Educational Displays, Foods & Nutrition, STEM Divisions, and more!

Follow the link to the 4-H Summer Showcase Registry and select which prizes you would like to purchase for the 4-H Red Barn champions. Each prize on the registry is selected to correspond with a particular 4-H static division. The prizes you purchase will be shipped directly to the 4-H Office for storage until the county fair. Be sure to share with your friends and family!

4-H Summer Showcase Registry: a.co/o6TzkG14.





Have a star 4-Her that deserves recognition?

Have a picture from a project meeting or 4-H event that you would like to share with the community?

Let us know! Email csling@ksu.edu



To make the best better!



K-STATE
Research and Extension

Wyandotte County

K-State Research and Extension is committed to providing equal opportunity for participation in all programs, services and activities. Program information may be available in languages other than English. Reasonable accommodations for persons with disabilities, including alternative means for communication (e.g., Braille, large print, audio tape, and American Sign Language) may be requested by contacting the event contact Casey Ling two weeks prior to the start of the event (2 weeks before event) at (csling@ksu.edu or 913-299-9300). Requests received after this date will be honored when it is feasible to do so. Language access services, such as interpretation or translation of vital information will be provided free of charge to limited English proficient individuals upon request.